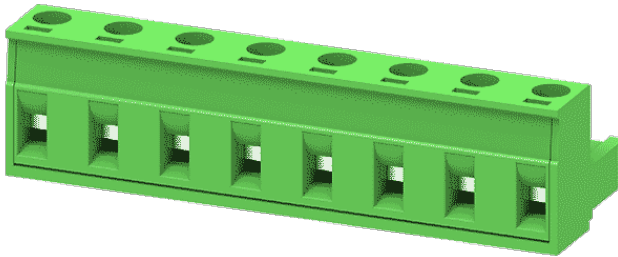


Product Type: Plug-in terminal-Plug

Product Name:MC-RB7.5H16C-0001

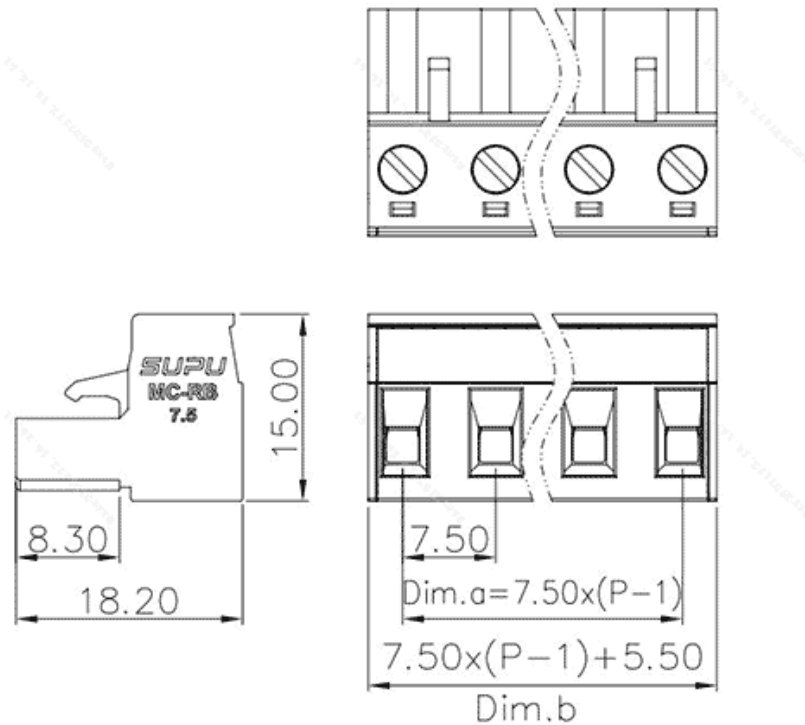


Product Description: Pitch:7.5mm Rated

Voltage : 630V Rated Current:18A Connection

method : Screw connection colour : customizable

## Product Size



## Parameters

☞ SUPU ID	MC-RB7.5H16C-0001
☞ Pitch	7.5
☞ Number of levels	single layer
☞ Number of connections	16

Connection method	Screw connection
Protection Level	IP20
Operating temperature range	-40~+105°C
Insulation material	PA66
Insulation material group	I
Contact material	Copper alloy
Contact plating	Sn,Plated
Color	Green/Black/Blue/Grey/Orange/Red

## Technical data

IEC Rated Current	18A
IEC Rated Voltage	630V
Overvoltage category	III/III/ II
Degree of pollution	3 2 2
Rated impulse voltage	6.0KV 6.0KV6.0KV
UL Rated Current	15A - 10A
UL Rated Voltage	300V - 300V
Conductor cross section rigid	0.2-2.5mm <sup>2</sup>
Conductor cross section flexible	0.2-2.5mm <sup>2</sup>
Conductor cross section flexible,with furrule	0.2-2.5mm <sup>2</sup>
Locking screw Specification	M3
Locking screw torque	0.5N.m
Fixed Screw Specification	-
固定螺钉扭矩	-

☞ Stripping length	7~8mm
☞ Use group	B/C/D
☞ Rated cross section	24~12AWG

## Commercial data

☞ Order No	MC-RB7.5H16C-0001
------------	-------------------

### Ningbo SUPU Electronics Co., Ltd.

Address: No. 150, Xinxing 4th Road, High-tech Industrial Development Zone,  
Cixi City, Zhejiang Province, China

Zip code: 315303

Switchboard: +86 574-63288158

Fax: +86 574-63288170

E-mail:supucontact@supu.cn

Service Hotline: 400-626-6336



Wechat