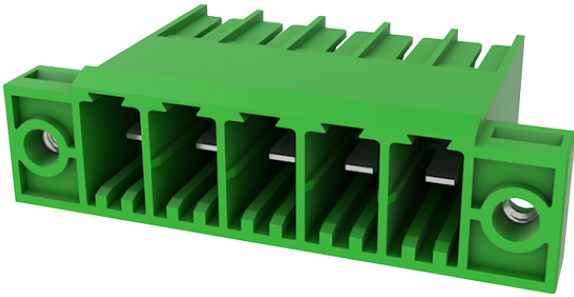


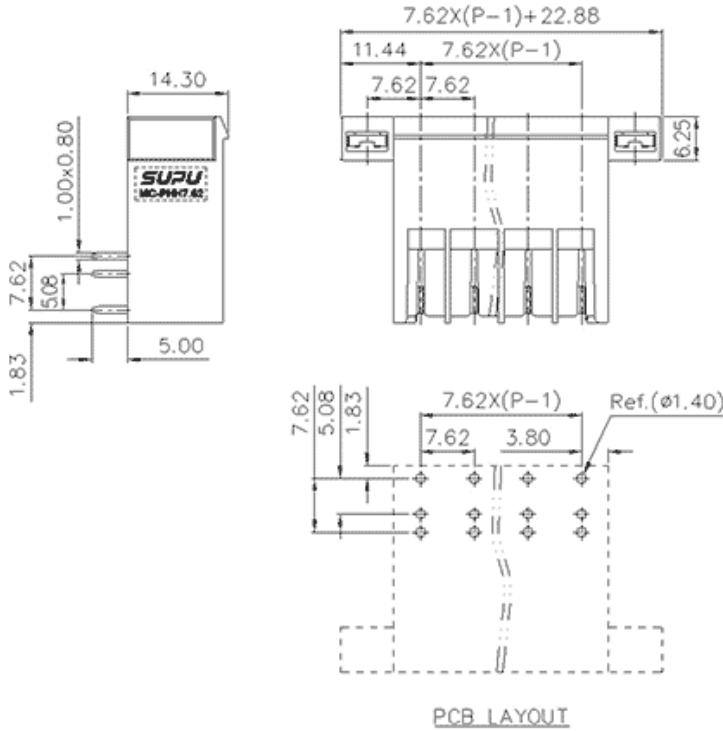
Product Type: Plug-in terminal-Socket

Product Name:MC-
PHH7.62H06-F-0030



Product Description: Pitch: 7.62mm Rated
Voltage : 630V Rated Current: 41A
colour : customizable

Product Size



Parameters

⌘ SUPU ID	MC-PHH7.62H06-F-0030
⌘ Pitch	7.62
⌘ Number of levels	Single layer
⌘ Number of connections	6

☞ Connection method	-
☞ Protection Level	IP20
☞ Operating temperature range	-40~+105°C
☞ Insulation material	PA66
☞ Insulation material group	I
☞ Contact material	Copper alloy
☞ Contact plating	Sn,Plated
☞ Color	Green/Black/Blue/Grey/Orange/Red

Technical data

☞ IEC Rated Current	630V
☞ IEC Rated Voltage	41A
☞ Overvoltage category	III III II
☞ Degree of pollution	3 2 2
☞ Rated impulse voltage	6.0KV 6.0KV 6.0KV
☞ UL Rated Current	41A 41A 10A
☞ UL Rated Voltage	300V 150V 300V
☞ Use group	B/C/D

Commercial data

☞ Order No	MC-PHH7.62H06-F-0030
------------	----------------------

Address: No. 150, Xinxing 4th Road, High-tech Industrial Development Zone,

Cixi City, Zhejiang Province, China

Zip code: 315303

Switchboard: +86 574-63288158

Fax: +86 574-63288170

E-mail:supucontact@supu.cn

Service Hotline: 400-626-6336



Wechat

Date:2026-04-27 18:00

The right to modify data belongs to SUPU.