

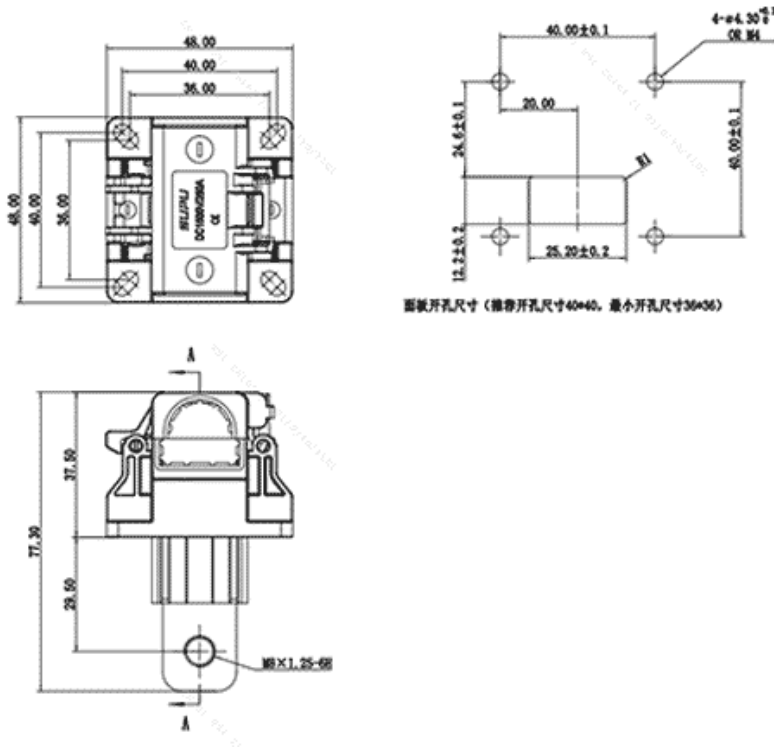


Product Type: IP20 connector

Product Name:ESF-SU250A19B

Product Description: Nominal operating voltage 1500V DC, Rated current 250A, Color: Black, wiring method: screw

Product Size



Parameters

☞ SUPU ID	ESF-SU250A19B
☞ Connection method	Screw thread
☞ Protection Level	IP20
☞ Operating temperature range	-40°C~125°C

☞ Insulation material	PA
☞ Insulation material group	III
☞ Contact material	Copper alloy
☞ Contact plating	Ni,Plated

## Technical data

☞ Overvoltage category	III
☞ Degree of pollution	3
☞ Rated impulse voltage	10KV
☞ UL Rated Current	250A
☞ UL Rated Voltage	1500V
☞ Conductor cross section rigid	70mm <sup>2</sup> ( AWG2/0)
☞ Conductor cross section flexible	70mm <sup>2</sup> ( AWG2/0)
☞ Rated cross section	70mm <sup>2</sup> ( AWG2/0)
☞ Can connect copper bar specifications	18*4mm and more

## Commercial data

☞ Order No	ESF-SU250A19B
☞ Packing unit	PCS
☞ Minimum order quantity	1

## Ningbo SUPU Electronics Co., Ltd.

Address: No. 150, Xinxing 4th Road, High-tech Industrial Development Zone,  
Cixi City, Zhejiang Province, China

Zip code: 315303

Ningbo SUPU Electronics Co., Ltd.

Switchboard: +86 574-63288158

Fax: +86 574-63288170

E-mail:supucontact@supu.cn

Service Hotline: 400-626-6336



Wechat

---

Date:2026-06-03 21:37

The right to modify data belongs to SUPU.